



### 1SX74-T



*Actual product appearance may vary.*

**SX Series Subminiature Basic Switch, Single Pole Double Throw (SPDT), 250 Vac, 7 A, Pin Plunger Actuator, Solder Termination**

#### Features

- Long operating life
- Elongated mounting hole for easier, more accurate mounting
- Choice of actuation (plunger, as well as a variety of integral and auxiliary actuators)
- Choice of electrical termination (solder, quick connect, PCB)
- Choice of operating characteristics
- Optional series constructions available (gold contacts for low energy switching, bifurcated gold contacts for maximum reliability, power load switching capability to 7 A)
- MIL-PFR-8805 qualified listings available

#### Potential Applications

- Aerospace
- Appliances
- Vending machines
- Timing devices
- Office equipment
- Computer/business equipment
- Test instruments
- Medical/dental equipment
- Communications equipment
- HVAC equipment
- Manually operated devices
- Valves

#### Description

MICRO SWITCH™ SX Series subminiature basic switches are used for simple or precision on/off application needs. They are small, precision snap-action switches that are ideal where savings in space and weight are important.

Product Specifications	
Switch Type	Subminiature 10,2 mm H x 5,08 mm W x 12,7 mm L [0.4 in H x 0.20 in W x 0.5 in L]
Sealed	No
Ampere Rating	7 A
Circuitry	Single Pole Double Throw (SPDT)
Actuator	Pin Plunger
Termination	Solder
Operating Temperature Range	-53 °C to 121 °C [-65 °F to 250 °F]
Voltage	250 Vac
Approvals	CSA, UL
Contact Type	Silver
Operating Force (O.F.)	1,39 N [5.0 oz] max.

Release Force (R.F.)	0,28 N [1.0 oz] min.
Pretravel (P.T.)	0,5 mm [0.020 in] max.
Overtravel (O.T.)	0,25 mm [0.010 in] min.
Differential Travel (D.T.)	0,13 mm [0.005 in] max.
Operating Position (O.P.)	8,13 mm $\pm$ 0,38 mm [0.320 in $\pm$ 0.015 in]
Housing Material	General Purpose Phenolic
High Temperature	121 °C [250 °F]
CE mark	61058-1
UL File #	E12252
CSA File #	LR41372
Agency Approvals and Standards	1054
Mounting Screw Size	22,1 mm [0.087 in]
Mounting Centers	4,83 mm [0.19 in]
Maximum Tightening Torque	0,22 N m [2.0 in lb]
Weight	1,36 g [0.003 lb]
Package Height	8,89 mm [0.35 in]
Package Width	5,0 mm [0.20 in]
Package Length	12,7 mm [0.50 in]
Recommended For	Most applications
Comment	Turret type solder terminals.
Availability	Global
UNSPSC Code	30211905
UNSPSC Commodity	30211905 Snap switches
Series Name	SX

# MICRO SWITCH

FREEPORT ILLINOIS, U.S.A  
A DIVISION OF HONEYWELL  
FED. MFG. CODE 91929

# SWITCH - BASIC

CATALOG LISTING

## ISX74-T

PRODUCT CODE

## VDA6560

X63084-SX

CATALOG LISTING

## ISX74-T

PAGE 1 OF 1

# M

RELEASE NO. PR-4982

DRAWING NUMBER

7

ISSUE

CHECK

REVISIONS

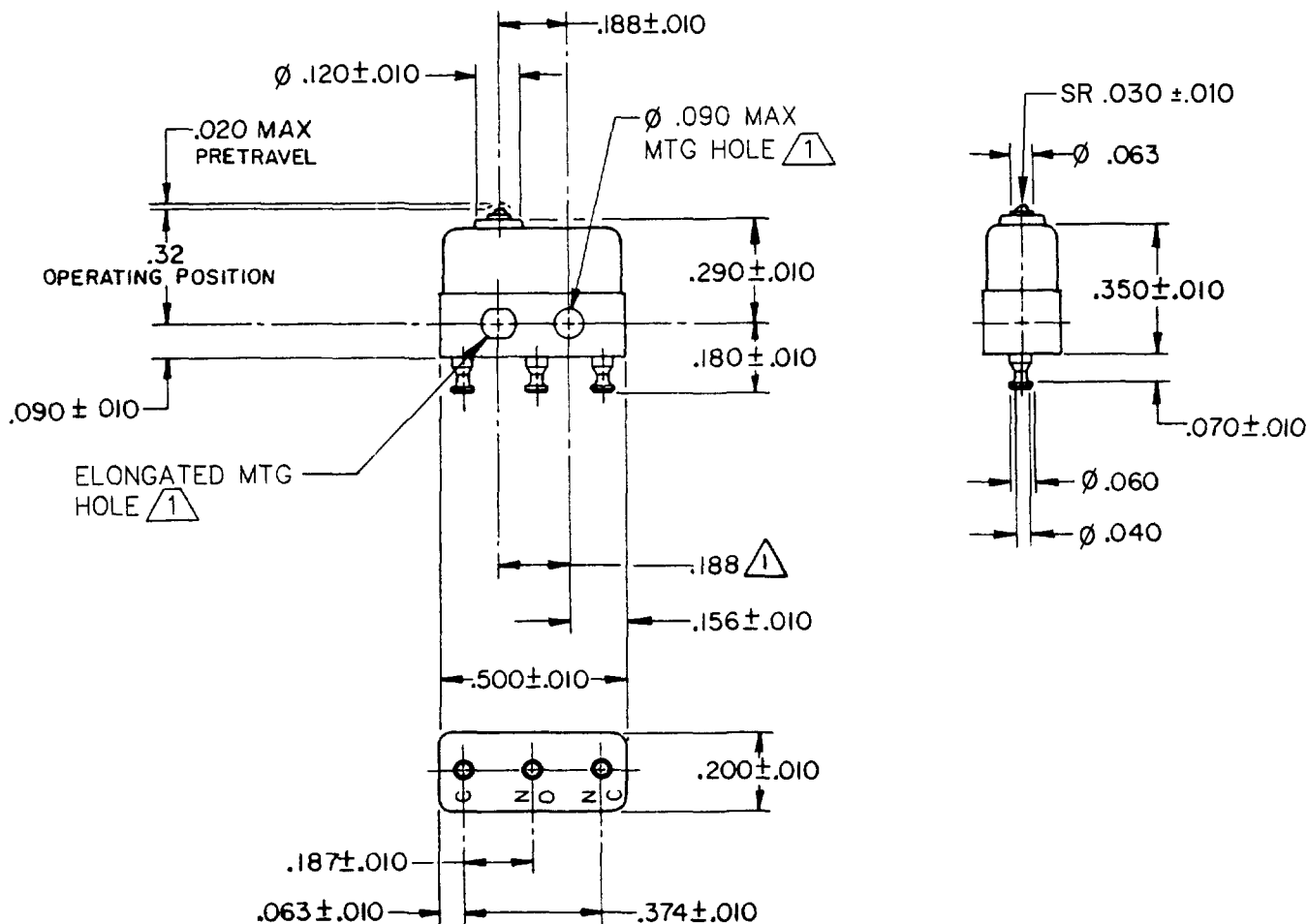
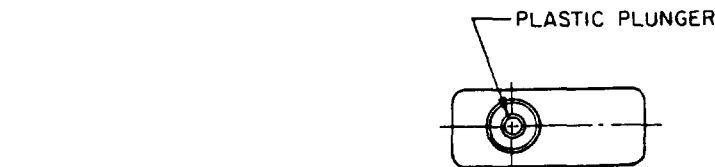
A	PR 4982	04APR05
	DAW 23 APR 75	
B	C035885	
	RER B OCT 75	
C	C071574	AK
	JAL 4 JUN 92	
D	C082804	
	GJW 12 FEB 97	
E	201033	
	CSL 14 AUG 00	
F	0012045	31 MAR 75
	KSR 04 APR 05	

RASTER

FO-52848-A

DRAWN

R E R 127 MAR 75 CHECK DAW



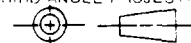
**NOTE -**

- 1 - MOUNTING HOLES WILL ACCEPT PINS OR SCREWS OF .087 MAX DIA ON .188  $\pm$  .002 CENTERS
- 2 - TERMINALS ARE PLATED FOR SOLDERING
- 3 - SWITCH WILL WITHSTAND TEMPERATURE OF 250 °F
- 4 - SWITCH HAS A GREATER OVERTRAVEL THAN STANDARD CONSTRUCTION  
ADDITIONAL OVERTRAVEL WILL TEND TO REDUCE MECHANICAL LIFE

ANSI Y14.5M-1982 APPLIES

THIS DRAWING COVERS A PROPRIETARY ITEM AND IS THE PROPERTY OF MICRO SWITCH, A DIVISION OF HONEYWELL. THIS DRAWING IS NOT TO BE COPIED OR USED WITHOUT THE APPROVAL OF MICRO SWITCH.

THIRD ANGLE PROJECTION



CHARACTERISTICS		ELECTRICAL DATA		SCALE 2 TO 1																													
OPERATING FORCE ---	5 OZ MAX	CONTACT ARRANGEMENT SPDT		DO NOT SCALE PRINT																													
RELEASE FORCE ---	1 OZ MIN	28 VOLTS DC RATING		TOLERANCES																													
DIFFERENTIAL TRAVEL ---	.005 MAX	INDUCTIVE --- SEA LEVEL --- 4 AMP		APPLY TO DESIGN UNITS. CONVERSIONS ARE ONLY FOR REFERENCE. UNLESS NOTED, TOLERANCES ARE :																													
OVERTRAVEL ---	.010 MIN	RESISTIVE --- SEA LEVEL --- 7 AMP		<table border="1"> <tr> <th>DIM.</th> <th>TOL.</th> <th>DIM.</th> <th>TOL.</th> </tr> <tr> <td>mm</td> <td>mm/in</td> <td>in</td> <td>mm/in</td> </tr> <tr> <td>NO PLACES</td> <td>X</td> <td>-.04</td> <td>3.81/03</td> </tr> <tr> <td>ONE PLACE</td> <td>X,X</td> <td>0.41/018</td> <td>X,X</td> </tr> <tr> <td>TWO PLACES</td> <td>X,XX</td> <td>0.157/008</td> <td>X,XX</td> </tr> <tr> <td>THREE PLACES</td> <td>X,XXX</td> <td></td> <td>X,XXX</td> </tr> <tr> <td>ANGLES</td> <td></td> <td></td> <td></td> </tr> </table>		DIM.	TOL.	DIM.	TOL.	mm	mm/in	in	mm/in	NO PLACES	X	-.04	3.81/03	ONE PLACE	X,X	0.41/018	X,X	TWO PLACES	X,XX	0.157/008	X,XX	THREE PLACES	X,XXX		X,XXX	ANGLES			
DIM.	TOL.	DIM.	TOL.																														
mm	mm/in	in	mm/in																														
NO PLACES	X	-.04	3.81/03																														
ONE PLACE	X,X	0.41/018	X,X																														
TWO PLACES	X,XX	0.157/008	X,XX																														
THREE PLACES	X,XXX		X,XXX																														
ANGLES																																	
		MAXIMUM INRUSH --- 24 AMP		<table border="1"> <tr> <td>DESIGN UNITS</td> <td><input type="checkbox"/> SI METRIC</td> <td><input checked="" type="checkbox"/> U.S. CUSTOMARY</td> </tr> </table>		DESIGN UNITS	<input type="checkbox"/> SI METRIC	<input checked="" type="checkbox"/> U.S. CUSTOMARY																									
DESIGN UNITS	<input type="checkbox"/> SI METRIC	<input checked="" type="checkbox"/> U.S. CUSTOMARY																															
APPROVALS	KEMA, CE	7A 250V ~ T125 5E4		CE																													
	UL, CSA	7A 250 VAC		BRAND L7																													
				WEIGHT	.003 LB MAX																												